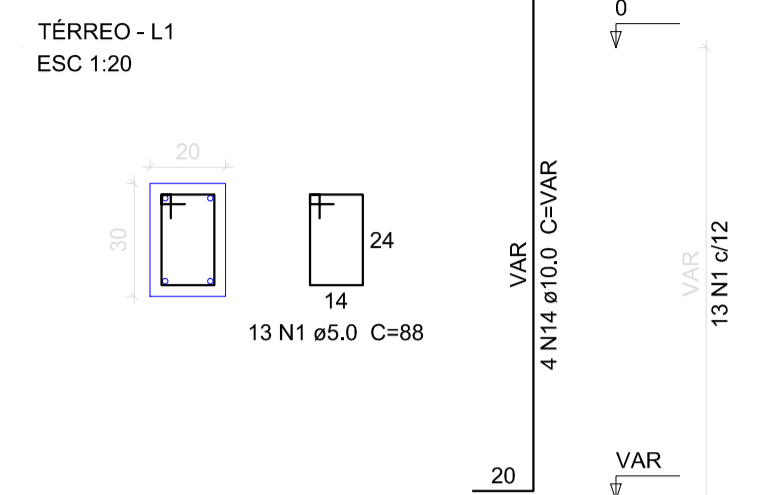
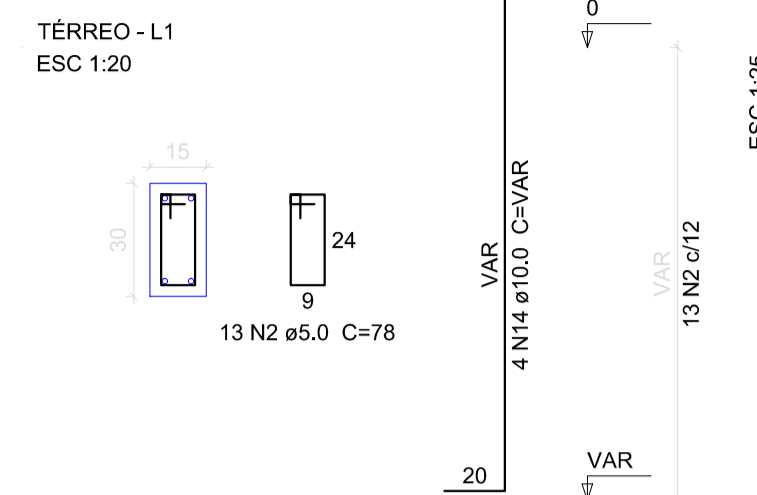


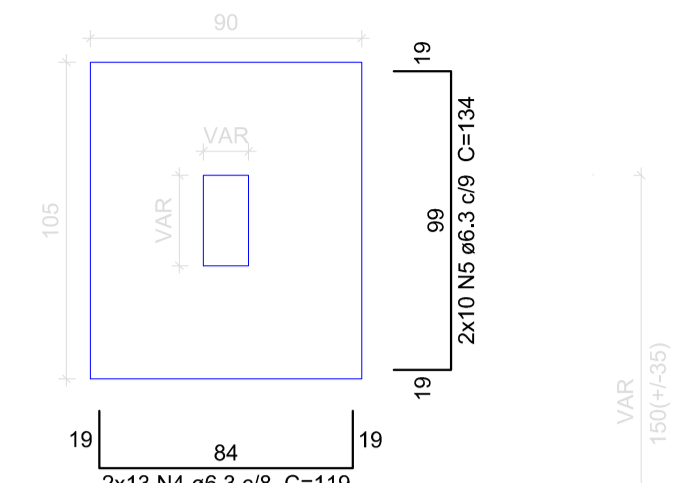
P1



P8



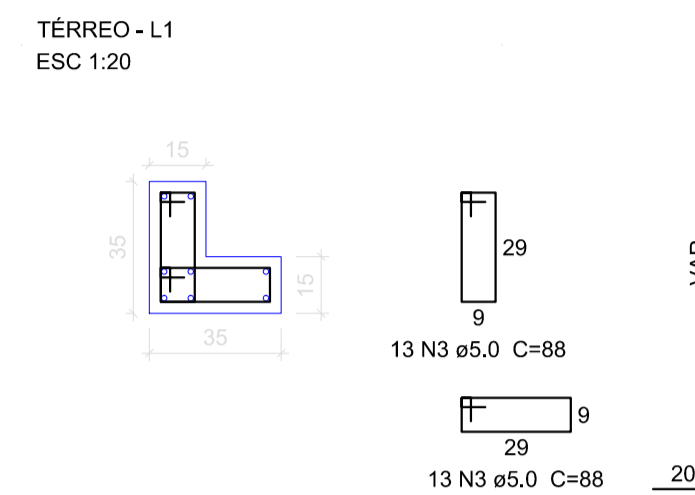
S1=S8
PLANTA
ESC 1:25



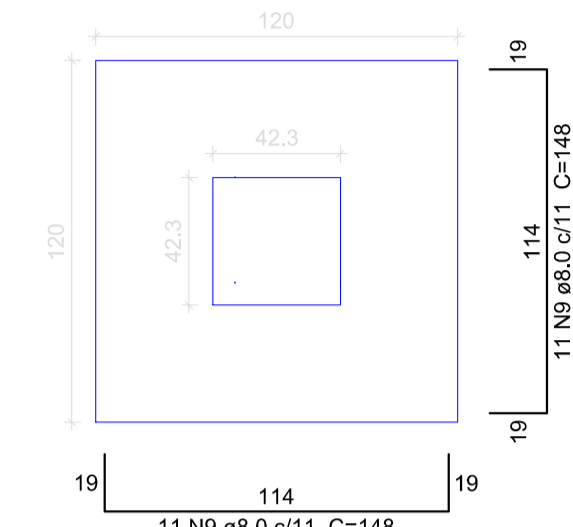
Solo com capacidade de suporte > 1.50 kgf/cm²
Solo compactado sobre a sapata
peso específico > 1600.00 kgf/m³

CORTE
ESC 1:25

P4=P5



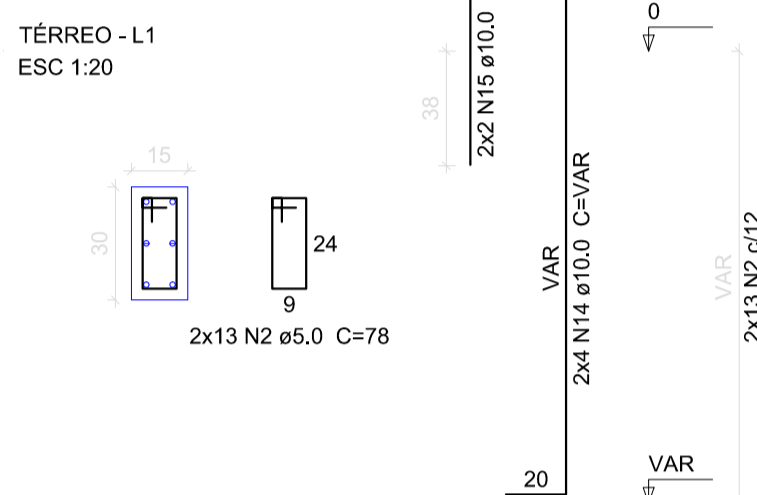
S4=S5
PLANTA
ESC 1:25



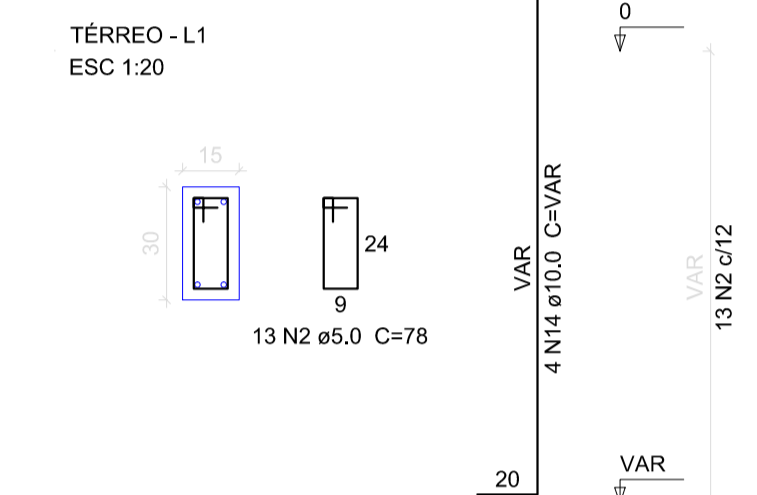
Solo com capacidade de suporte > 1.50 kgf/cm²
Solo compactado sobre a sapata
peso específico > 1600.00 kgf/m³

CORTE
ESC 1:25

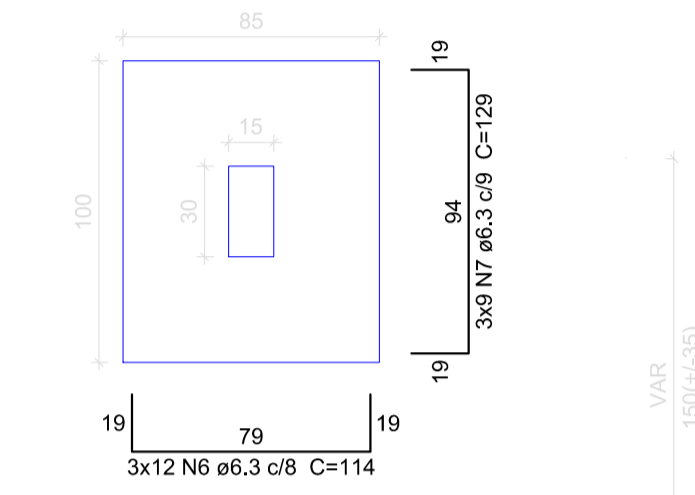
P2=P3



P6



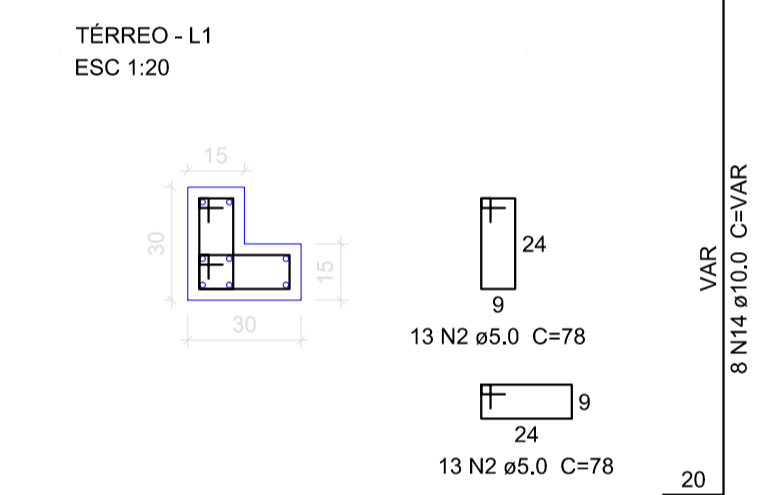
S2=S3=S6
PLANTA
ESC 1:25



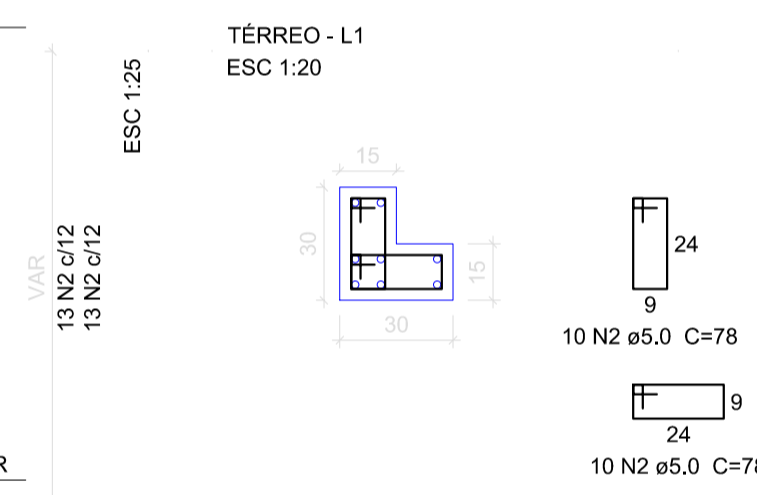
Solo com capacidade de suporte > 1.50 kgf/cm²
Solo compactado sobre a sapata
peso específico > 1600.00 kgf/m³

CORTE
ESC 1:25

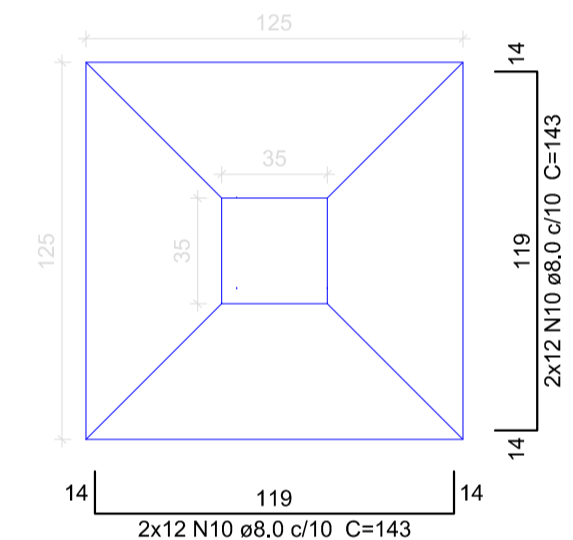
P7



P9



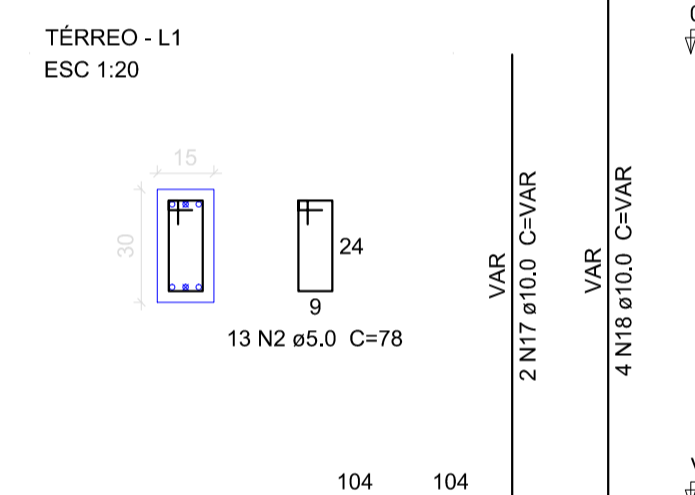
S7=S9
PLANTA
ESC 1:25



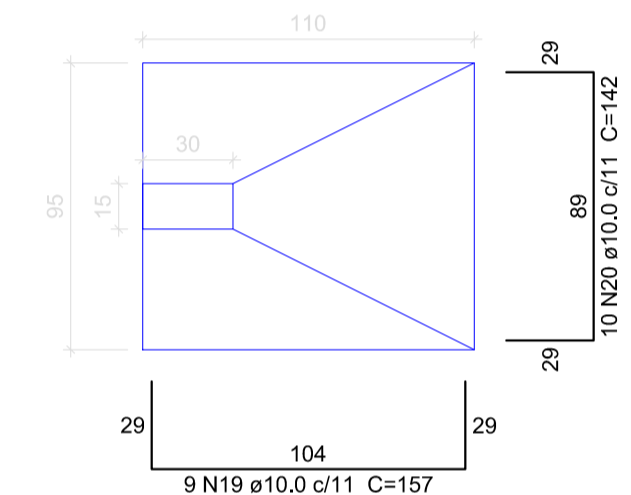
Solo com capacidade de suporte > 1.50 kgf/cm²
Solo compactado sobre a sapata
peso específico > 1600.00 kgf/m³

CORTE
ESC 1:25

P12=P14



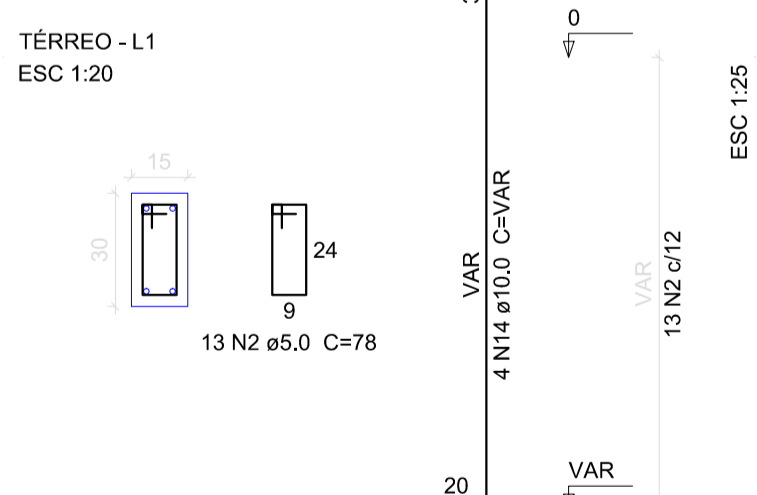
ESC 1:25



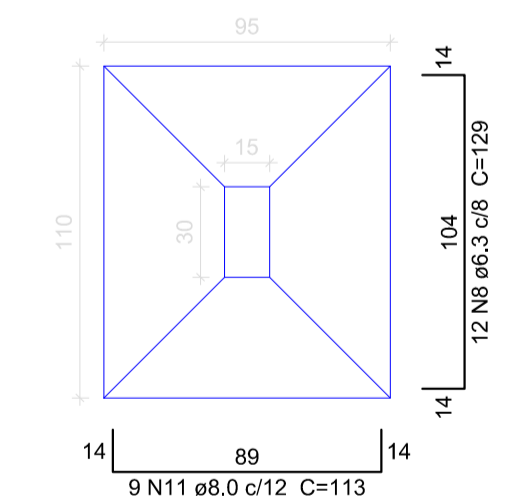
Solo com capacidade de suporte > 1.50 kgf/cm²
Solo compactado sobre a sapata
peso específico > 1600.00 kgf/m³

CORTE
ESC 1:25

P10



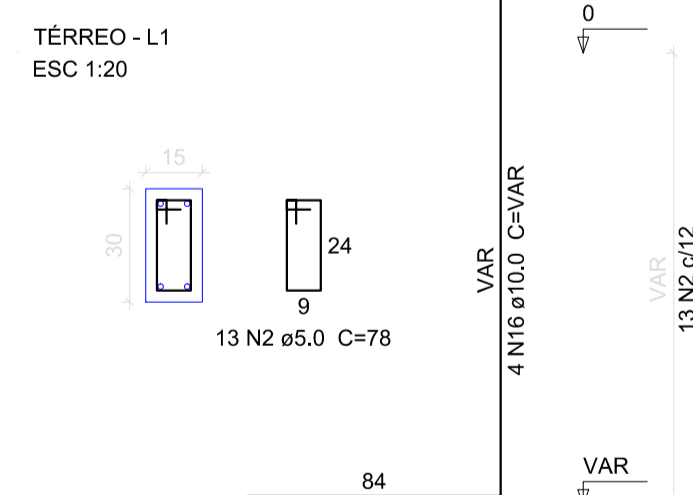
S10
PLANTA
ESC 1:25



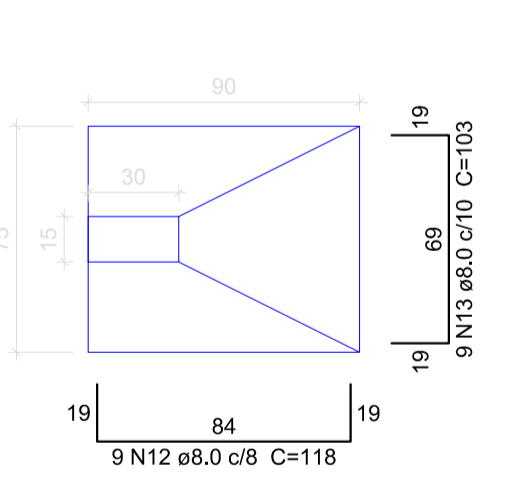
Solo com capacidade de suporte > 1.50 kgf/cm²
Solo compactado sobre a sapata
peso específico > 1600.00 kgf/m³

CORTE
ESC 1:25

P11=P15=P16



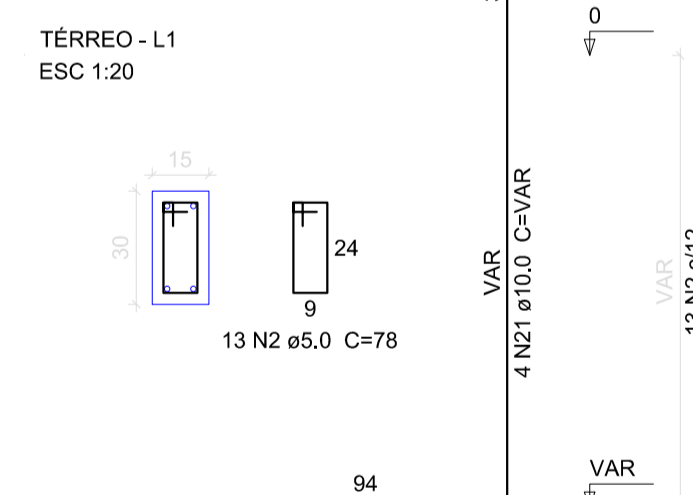
S11=S15=S16
PLANTA
ESC 1:25



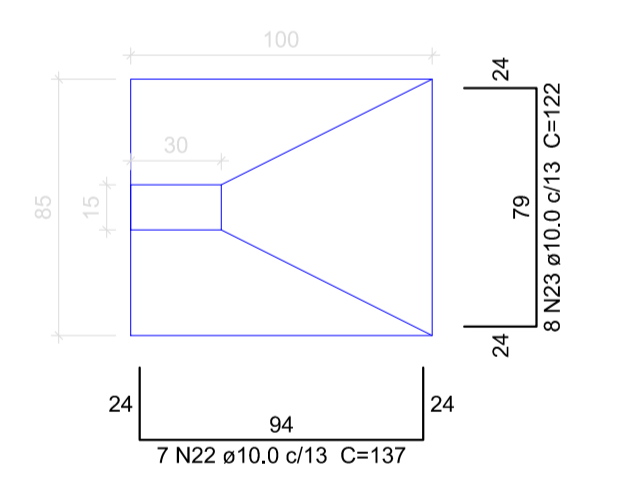
Solo com capacidade de suporte > 1.50 kgf/cm²
Solo compactado sobre a sapata
peso específico > 1600.00 kgf/m³

CORTE
ESC 1:25

P13



ESC 1:25



Solo com capacidade de suporte > 1.50 kgf/cm²
Solo compactado sobre a sapata
peso específico > 1600.00 kgf/m³

CORTE
ESC 1:25

Relação do aço

CAÇO	N	DIAM	Q	UNIT (cm)	C.TOTAL (cm)
CA60	1	5.0	13	88	1144
CA50	2	5.0	189	78	14742
	3	5.0	52	88	4576
	4	6.3	26	119	3094
	5	6.3	20	134	2680
	6	6.3	36	114	4104
	7	6.3	27	129	3483
	8	6.3	12	129	1548
	9	8.0	44	148	6512
	10	8.0	48	143	6864
	11	8.0	9	113	1017
	12	8.0	27	118	3186
	13	8.0	27	103	2781
	14	10.0	48	VAR	VAR
	15	10.0	4	75	300
	16	10.0	12	VAR	VAR
	17	10.0	4	VAR	VAR
	18	10.0	8	VAR	VAR
	19	10.0	18	157	2826
	20	10.0	20	142	2840
	21	10.0	4	VAR	VAR
	22	10.0	7	137	959
	23	10.0	8	122	976
	24	12.5	8	VAR	VAR

Resumo do aço

CAÇO	DIAM	C.TOTAL (m)	PESO + 10 % (kg)
CA50	6.3	149.1	40.1
	8.0	203.6	88.4
	10.0	254.7	172.7
	12.5	17.2	18.1
CA60	5.0	204.7	34.7
CA50		319.3	
CA60		34.7	

Vol. de concreto total (C-25) = 6.01 m³
Área de forma total = 41.44 m²

Prefeitura de Rio das Antas

Município de Rio das Antas



ELABORAÇÃO PROJETO
SECRETARIA DE PLANEJAMENTO

OBRA/LOCALIZAÇÃO
**Ampliação
Rua Ipoméia
Rua Lucas Alves Ribeiro - Ipoméia**

Administração 2017/2020

REFERENCIA
- PROJETO ESTRUTURAL
- SAPATAS E PILARETES

GRAFICAÇÃO
Willian
AREA AMPLIAÇÃO
175,10 m²
Desenho
05
DATA
Maio/2018
ESCALA
Indicada
Folha
05/08

PROJETO ARQUITETÔNICO

EXECUÇÃO